

Canon

imageRUNNER™
600



networked
enterprise
solutions

The high-volume digital production system offering superior power, flexibility and document finishing capabilities.

networked enterprise solutions

In today's business environment, performing just one function doesn't cut it. You must manage multiple tasks simultaneously, perform them exceptionally, and complete everything on time, every time. INTRODUCING THE imageRUNNER™ 600 DIGITAL PRODUCTION SYSTEM, DESIGNED TO DRIVE YOUR PRODUCTIVITY TO NEW HEIGHTS.

Operating at 60 pages per minute, delivering the highest output quality in its class, connecting seamlessly to your existing network, and driving a new level of finishing capabilities, the imageRUNNER 600 handles the demands of high-quality, production-level printing and copying with ease. Leveraging Canon's extensive expertise in engine design, the imageRUNNER 600 comes equipped with the most robust engine in Canon's digital product line, making it ideal for the high-volume needs of corporate copying and distributed printing, central reprographic departments, and print-on-demand. When you're looking for high-performance multifunctionality, look to the Canon imageRUNNER 600. It's the complete digital production system that makes you look and perform your best... 60 times a minute.

imageRUNNER™ 600



With its user-friendly design and consistency across all Canon Digital Imaging Systems, the imageRUNNER 600 Control Panel makes machine operation as simple as touching a button.

Whether you're copying or printing, the imageRUNNER 600 offers a wide range of imaging features guaranteed to make your documents look their best.

Uncompromising Speed

The imageRUNNER 600 delivers an uncompromising 60 pages per minute regardless of whether you're printing or copying. That's a page every second. When your jobs demand quick output, the imageRUNNER 600 is up to the task, and unlike some competitive machines, which slow down when printing at a high resolution, the imageRUNNER 600 delivers this speed at 1200 x 600 dpi resolution, the highest in its class.

The Highest Output Quality in its Class

Expanding upon Canon's world-class leadership in image quality, the imageRUNNER 600 captures the highest level of detail in every document, delivering copy and print output at an astounding 1200 x 600 dpi resolution. When combined with its ability to support up to 256 shades of gray, the superiority of imageRUNNER 600 output is clear to see.

Paper Capacity Designed to Keep You Running

Tired of reloading paper in your current machines? With the imageRUNNER 600 you can forget about frequent reloading. That's because the imageRUNNER 600 ships with a standard paper capacity of 4,150 sheets. If that's not enough, add the imageRUNNER 600's optional 3,500-sheet Paper Deck which brings total paper capacity to an unmatched 7,650 sheets.

The imageRUNNER 600's ability to hold up to 7,650 sheets of on-line paper capacity is surpassed only by the paper sizes and stocks supported. From statement to 11" x 17", and with added support for specialty stocks such as labels and transparencies, the imageRUNNER 600 is ideally suited to today's business applications.

Unique to the imageRUNNER 600 is the ability to feed from 17 to 110 lb. stock from all available paper sources. This support is of great significance when performing copy and print jobs requiring covers or multiple paper stocks.

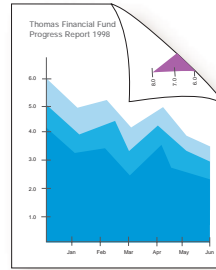
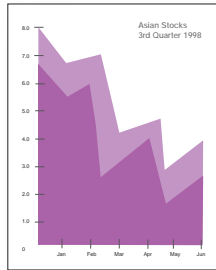
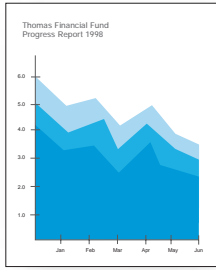
Whether you're copying or printing, the imageRUNNER 600 offers a wide range of imaging features guaranteed to make your documents look their best.



When fully configured, the imageRUNNER 600 delivers 7,650 sheets of on-line paper, the highest in its class.



The imageRUNNER 600's optional paper deck expands total paper capacity by 3,500 sheets and is ideal for production level environments.



Duplexing Screen
 Duplexing: Operating at rated engine speed, the imageRUNNER 600 trayless duplexing system provides significant productivity gains for all duplexed output.

The imageRUNNER 600 delivers

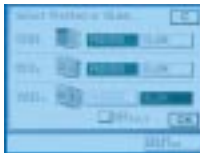
unique functionality, setting new standards for production level output.



Finishing Screen



Chapterization Screen



Printed/Blank Cover Screen



Paper Selection Screen



User Mailbox Screen



HD Memory Custom Settings



HD Memory Assignment Image Service Custom Settings



Cover Sheet Insertion Screen

Standard Automatic Duplexing and Document Feeder

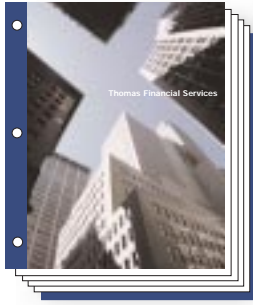
The imageRUNNER 600 ships standard with automatic duplexing and a high-capacity document feeder, both designed to deliver high levels of productivity.

With its trayless duplexing system, the imageRUNNER 600 delivers two-sided output at rated engine speed, eliminating the need for a separate duplex tray, while reducing potential sources of paper jams.

The imageRUNNER 600's Automatic Document Feeder feeds up to 100 duplexed originals, handling even the longest documents. With its ability to feed originals from 13 to 110 lb., the imageRUNNER 600 Automatic Document Feeder can accommodate almost any job you'll throw at it.

The Saddle-stitch Finisher delivers standard multiposition stapling, 3-hole punch, and booklet-making while offering optional support for Z-folding and insertion of post-process covers.





3-hole Punch:
A standard feature of the Saddle-stitch Finisher, 3-hole punch capability affords users another option for driving professional style output.



Double Book Stapling:
For jobs that require more extensive stapling, the imageRUNNER 600 finishers offers book stapling in either the left- or right- hand page margins.

Unique Functionality

The imageRUNNER 600 delivers a long list of unique functions designed to optimize system performance and simplify the completion of job tasks. The imageRUNNER 600 delivers most of these functions via an internal 2.1GB Image Server which ships standard with every unit. Examples of this functionality include:

- **Scan-Once-Print-Many and Automatic Page Orientation:** Minimizes scanner wear and tear while rotating scanned pages to match cassette paper orientation.
- **SmartScan™ Page Recognition:** Automatically detects text orientation, correcting misfed originals upon output.
- **Copy Reservation™:** Allows users to store copy jobs in memory while current copy or print jobs are being processed.
- **Automatic Page Impositioning:** Automatically arranges pages in correct order when making saddle-stitched booklets.
- **Confidential Mailboxes:** The imageRUNNER 600 supports creation of up to 100 individual user mailboxes for use in confidential print applications.
- **Forms Composition:** The imageRUNNER 600 provides for the storage of up to 100 on-line forms, allowing customers to ease their dependence on pre-printed forms.
- **In-line Finishing:** Whether driving output in copy or print applications, the imageRUNNER 600 offers extensive finishing capabilities including stapling, 3-hole punch, saddle-stitch, and Z-folded output on demand.

Completing the Job From Start to Finish

While the competition is content to offer stapled output, Canon's imageRUNNER 600 raises the bar, offering the most extensive level of document finishing in its class. The imageRUNNER 600 offers the choice of two finishers, both designed to enhance productivity and limit the steps required to complete copy and print jobs.

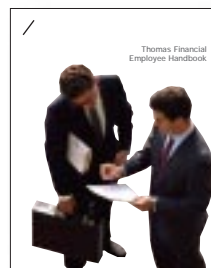
The imageRUNNER 600 Stapler Stacker offers two trays to handle Statement to 11" x 17" sized output. With a total output capacity of up to 2,250 sheets, the Stapler Stacker can handle even the longest print or copy runs. With the ability to staple up to 50 sheets in any corner of the page, or to place two staples in the left- or right-hand page margins, the imageRUNNER 600 finishes the job in style.

If your finishing needs are more extensive, Canon offers the Saddle-stitch Finisher. The imageRUNNER 600 Saddle-stitch Finisher holds a total of 3,900 sheets of paper, 3,000 in the top two trays, and 900 total in the tray designated for saddle-stitched output. The Saddle-stitch Finisher delivers the same finishing capabilities as the Stapler Stacker, but extends these capabilities by offering 3-hole punch and saddle-stitched output as standard.

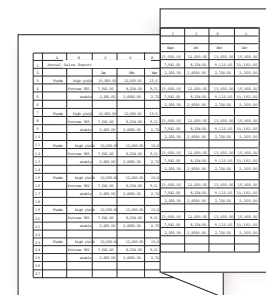
For those special finishing applications, the imageRUNNER 600 Saddle-stitch Finisher can be equipped with an optional Z-folding Unit for folding 11" x 17" documents into letter-sized output. In addition, the Saddle-stitch Finisher will also support an optional Document Inserter, designed to deliver post-process cover inserts.



Saddle-stitch:
When equipped with the Saddle-stitch Finisher, users can produce fully completed saddle-stitched, folded booklets in walk-up copy and network print applications.



Single Corner Stapling:
The imageRUNNER 600 finishers extend the capabilities of traditional single-position stapling by allowing users to staple in any corner of the document.



Z-folding:
Ideal for folding 11" x 17" documents into 8-1/2" x 11" job streams, the Saddle-stitch Finisher's Z-folding option automates what is typically a manual process today.



Driver: The imageRUNNER 600's intuitive printer driver software automatically configures itself on users' desktops, and simplifies job setup and delivery.

Our goal is simple, to provide you with the best solutions to your document and information management needs.

Setting New Performance Benchmarks

Canon pioneered connecting multifunction office equipment to networks. With the imageRUNNER 600, we have leveraged this expertise to set a new performance standard—one that few competitors can equal.

The key to imageRUNNER 600 network performance is a newly designed network print controller which installs directly into the main unit. The imageRUNNER 600 network print controller is built around a fast MIPS R5000 200MHz RISC processor, the most powerful in its class, and integrates both print processing and network connectivity on one board.

Delivering support for PCL®5e and Adobe® PostScript® 3 standard, the network print controller provides support for the most robust print processing languages in use today.

Combined with its standard connectivity for 10/100 Ethernet networks or optional Token Ring connection, the imageRUNNER 600 is in a class by itself.

Connectivity Software that Makes it Simple

The Network Print Controller ships with a suite of software that makes connecting to networks and driving output simple. All Network Print Controllers ship standard with Canon's NetSpot™ Device Management Software for installation, configuration, and management of network-connected imageRUNNER 600 systems.

With NetSpot, systems administrators and end-users can manage and remotely monitor imageRUNNER 600 systems receiving device status, job queue, system configuration, and setup information from anywhere in the network.

The power of NetSpot is not only available for Canon networked office systems, but is also available for third-party printers from Hewlett-Packard, Lexmark, and Xerox, dramatically extending NetSpot's capabilities in the enterprise.

Document Handling at the Click of a Button

In addition to shipping with NetSpot Device Management Software, all imageRUNNER 600s come standard with intuitive printer driver software and job management utilities designed to drive all system functionality to the user's desktop in an easy-to-use fashion.

Whether in the form of printer drivers, network job submission utilities, or job management software, access to the numerous document handling, throughput, and finishing functions of the imageRUNNER 600 is as easy as a few clicks of the mouse.





NetSpot's Status Tab provides systems administrators and end-users with detailed information concerning imageRUNNER 600 operational status. Detailing all trouble conditions existing at a given imageRUNNER 600 device, users are provided with instructions on alleviating error conditions and are informed of appropriate support personnel.



NetSpot's Features Tab allows systems administrators and end-users to immediately identify imageRUNNER 600 device configurations most appropriate for their required applications and output.

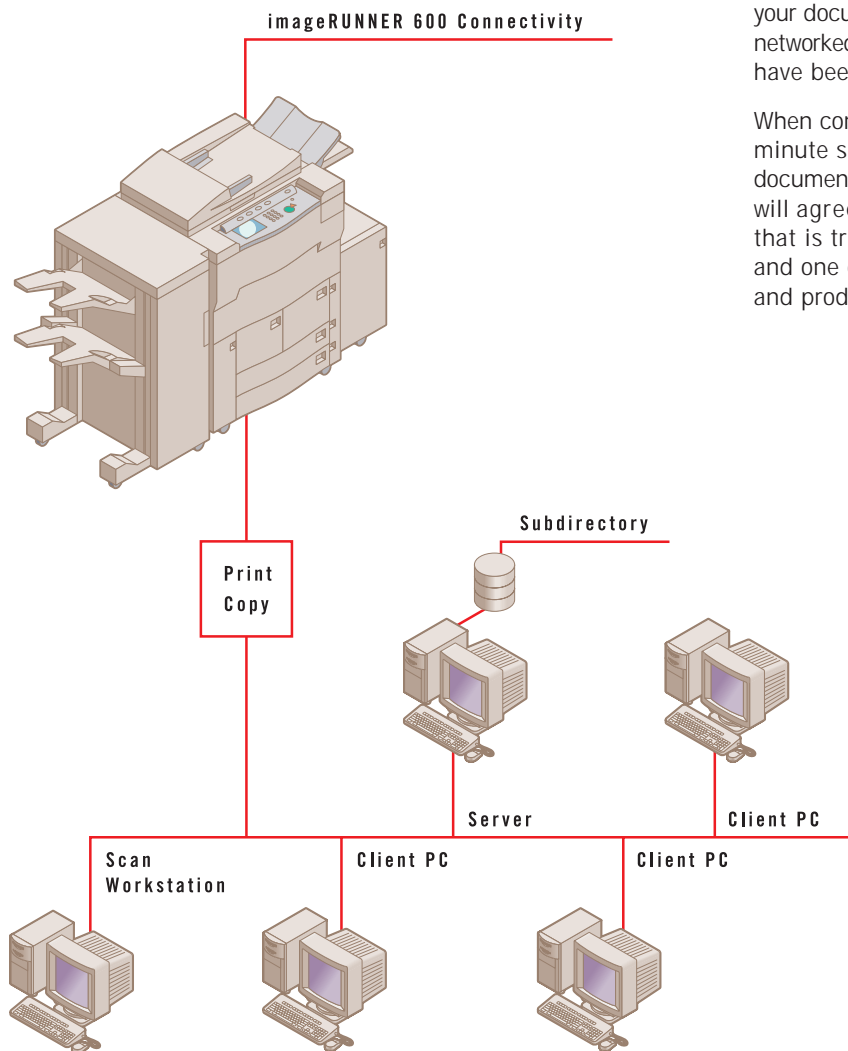
An Impressive Lineage

The imageRUNNER 600 is the newest and most powerful member of the most innovative family of digital multifunction products available.

Canon's pioneering efforts in creating the digital multifunction marketplace has provided us with a considerable advantage in identifying emerging customer needs. This experience, combined with our exhaustive funding of new research and development, have allowed us to assume a commanding position in the digital multifunction marketplace.

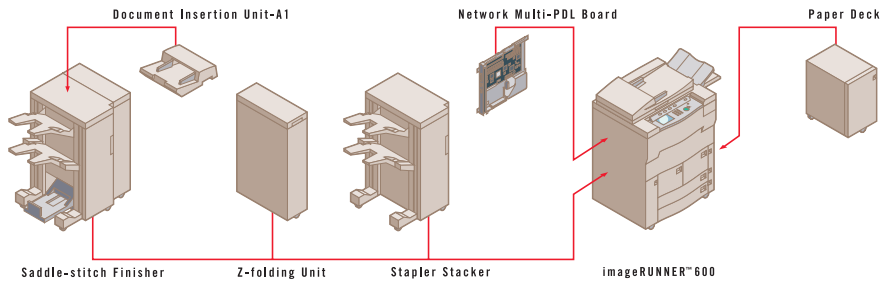
Our goal is simple, to provide you with the best solutions to your document and information management needs. Canon's networked office systems, including the imageRUNNER 600, have been specifically designed to meet that goal.

When considering the imageRUNNER 600's 60-page-per-minute speed, 1200 x 600 dpi image quality, high-end document finishing, and effortless networking, we think you will agree that the imageRUNNER 600 is a solution that is truly unique among today's competitive offerings, and one destined to make your business more effective and productive.



networked
enterprise
solutions

imageRUNNER™ 600



imageRUNNER 600 Specifications

Basic Specifications

Type:	Digital, Multifunction Imaging System
Imaging System:	Laser Dry Electrostatic Transfer
Developing System:	Dry Monocomponent Toner Projection
Image Server Memory:	2.1GB Standard
First-print Speed:	6 seconds from ADF
Warm-up Time:	5 minutes or less
Multipage Speed:	60 pages per minute
Resolution:	600 dpi x 600 dpi
Interpolated Resolution:	1200 dpi x 600 dpi
Halftone:	256 gradations of gray
Scanner:	CCD, 600 dpi resolution
Document Handling:	Automatic Document Feeder
Document Feeder Capacity:	100 Sheets
Max. Original Size:	11" x 17"
Output Sizes	
Cassette:	Statement to Ledger
Bypass:	Statement to Ledger
Paper Supply	
Standard:	Dual Front-loading Trays (1,500 Sheets Each) Dual Front-loading Cassettes (550 Sheets Each) 50-sheet Stack Bypass (Total: 7,650 Sheets)
Optional:	3,500-sheet Paper Deck (Total: 7,650 Sheets)
Output Options:	Stapler Stacker Saddle-stitch Finisher
Duplexing:	Standard Automatic Trayless Duplexing
Magnification Reduction/	
Enlargement:	25% to 400% in 1% increments
Multiple Copies:	1 to 999
Paper Weights:	17 to 110 lb.
Drum:	Amorphous Silicon – estimated yield 5,000,000 impressions
Duty Cycle:	250,000 impressions per month

Accessories

Automatic Document Feeder

Acceptable Originals:	Statement to Ledger
Capacity:	100 Sheets (LTR/20 lb.)
Max. Paper Weight:	Up to 110 lb. Index (LTR)

Paper Deck

Paper Capacity:	3,500 Sheets (LTR)
Paper Weights:	17 lb. to 110 lb. Index
Power Source:	Directly from Main Unit

Stapler Stacker

Number of Trays:	Two Trays
Tray Capacity	
Top Tray:	250 Sheets (All Sizes)
Lower Tray:	2,000 Sheets (LTR)
Staple Positions:	Multiposition Stapling (1) Top Corner (Two Patterns) (2) Side Margin (1 Pattern)
Stapling Capacity:	50 Sheets
Power Source:	Directly from Main Unit

Saddle-stitch Finisher

Number of Trays:	Three Trays (One Saddle-stitch)
Tray Capacity	
Top Tray:	1,000 Sheets (All Sizes)
Lower Tray:	2,000 Sheets (LTR)
Saddle-stitch Tray:	900 Sheets
Staple/Punch Positions:	Multiposition Stapling (1) Top Corner (2) Side Margin (3) Saddle-stitch (4) 3-hole Punch (Left Margin)

Stapling/Punch Capacity:	50 Sheets (Saddle-stitch: 15)
Saddle-stitch Specifications	
Total Sides Imaged:	60 Total Sides (15 Sheets)
Total Sets:	30 Total Sets
Folding:	V-folding Standard
Saddle-stitch Finisher Options	
Folding:	Optional Z-folding Unit
Inserts:	Post-process Document Inserter (100 Sheet Capacity)
Power Source:	Directly from Main Unit

Network Multi-PDL Board

Type:	Embedded Print/Network
Processor:	MIPS R5000 200MHz RISC
RAM	
Standard:	32MB (168 Pin DIMM)
Maximum:	64MB (168 Pin DIMM)
PDL Support:	Adobe® PostScript® 3 – PCL®5e
PostScript Fonts:	139 Type 1 and 3
PCL Fonts:	45 TrueType™
Hard Disk:	2.1GB
Optimized Features:	Continuous Print™ RIP-While-Print®
Printer Interface Ports:	Bi-Directional Centronics (Autosensing)
Topology:	Ethernet Token Ring (Optional)
Speed:	10/100 Mbps Ethernet 4/16 Mbps Token Ring

Protocols Supported

Ethernet:	TCP/IP, IPX/SPX™, Ethertalk
Token Ring:	TCP/IP, IPX/SPX
Network Interface Connections	
Ethernet:	10Base-T (RJ-45), 10Base-5
Token Ring:	RJ-45, DB-9

Contact your authorized Canon Dealer to determine the compatibility of systems and applications.

PCL is a registered trademark of Hewlett-Packard Corporation. Adobe and PostScript are registered trademarks of Adobe Systems Incorporated. IPX/SPX is a trademark and NetWare is a registered trademark of Novell, Inc. UNIX is a registered trademark in the United States and other countries, licensed exclusively through X/Open Company Limited. Continuous Print is a trademark and RIP-While-Print is a registered trademark of Electronics for Imaging, Inc. TrueType is a trademark and Macintosh is a registered trademark of Apple Computer, Inc. As an ENERGY STAR® Partner, Canon U.S.A., Inc. has determined that this product meets the ENERGY STAR® guidelines for energy efficiency. The ENERGY STAR name is a registered trademark of the U.S. Environmental Protection Agency. NetSpot, SmartScan, Copy Reservation and IMAGERUNNER are trademarks and Canon and GP are registered trademarks of Canon Inc. IMAGEANYWARE is a service mark of Canon U.S.A., Inc. All other terms and product names may be trademarks or registered trademarks of their respective owners, and are hereby acknowledged.

All specifications subject to change without notice.

Canon

Canon U.S.A., Inc.

Headquarters: One Canon Plaza, Lake Success, NY 11042 (516) 328-5000
Atlanta Office: 5625 Oakbrook Parkway, Norcross, GA 30093 (770) 849-7700
Chicago Office: 100 Park Blvd., Itasca, IL 60143 (630) 250-6200
Dallas Office: 3200 Regent Blvd., Irving, TX 75063 (972) 409-7800
Hawaii Office: 210 Ward Avenue, Suite 200, Honolulu, HI 96814 (808) 522-5930
Los Angeles Office: 15955 Alton Parkway, Irvine, CA 92618 (949) 753-4000
New Jersey Office: 100 Jamesburg Road, Jamesburg, NJ 08831 (732) 521-7000
Washington D.C. Office: 2110 Washington Blvd., Arlington, VA 22204-5799 (703) 807-3400

Canon U.S.A. Homepage: <http://www.usa.canon.com>

Canon Canada, Inc.

Toronto Office: 6390 Dixie Road, Mississauga, Ontario L5T 1P7 (905) 795-1111
Montreal Office: 5990 Cote de Liesse, Montreal, Quebec H4T 1V7 (514) 342-8821
Calgary Office: 2828 16 Street N.E., Calgary, Alberta T2E 7K7 (403) 219-5900

